



| AUTOMATION & CONTROL SYSTEMS | INDUSTRIAL INSTRUMENTATION |

| PNEUMATIC CONTROL SYSTEMS | HYDRAULIC CONTROL SYSTEMS |

| ELECTRICAL/POWER CONTROL SYSTEMS | MECHANICAL EQUIPMENT & SYSTEMS |

| F&G DETECTION & SUPPRESSION SYSTEM | SPARE PARTS MANAGEMENT |

| CHEMICAL INDUSTRY EQUIPMENT | PLANT & MACHINERY | ENGINEERING SERVICES |

(Your Partner in Intelligent Automation)

Introduction:

Autowell is a renowned leader in industrial automation and process control. With a strong reputation for innovation and excellence, we provide cutting-edge solutions that enhance efficiency and reliability across various industries. Our expertise and commitment to quality ensure that we meet the evolving needs of our clients in a dynamic market.

We assist our customers in addressing their most pressing challenges in Automation & Control, Industrial Process Instrumentation and Electrical Automation.

We are providing customized solutions and expert support to our customers to optimize their systems and enhance operational efficiency. Our commitment to understanding and resolving these critical issues allows us to deliver effective, tailored made automation strategies that drive success.

Autowell stands out from typical system integrators due to its diverse automation solution portfolio and deep technical expertise across equipment from major OEMs. Our asset-application specific approach to solution design ensures tailored solutions that meet unique operational needs. This combination of knowledge, skills, and customized strategies allows us to deliver exceptional value and innovation to our clients.

- **Automation & Control Systems**
- **Industrial Instrumentation**
- **Pneumatic Control Systems**
- **Hydraulic Control Systems**
- **Electrical/Power Control Systems**
- **Mechanical Equipment & Systems**
- **F&G Detection & Suppression System**
- **Spare Parts Management**
- **Chemical Industry Equipment**
- **Plant & Machinery**
- **Engineering Services**



Automation & Control Systems

- PLC Based Control Systems
- DCS Based Control Systems
- SCADA Based Control Systems
- Integrated Control Systems
- Motion Control Systems
- Energy Management Systems
- Emergency Shutdown Systems – ESD
- Tunnel Ventilation Systems - TVS
- Computer-based real-time Control Systems



Industrial Instrumentation:

- Flow Measurement
- Pressure Measurement
- Level Measurement
- Temperature Measurement
- pH, ORP & Conductivity Measurement
- Gas Analyzers/ Gas Chromatography
- PID Controllers / Paperless Data Recorders
- Industrial Weighing Scales and Systems
- Control Valves & Positioners



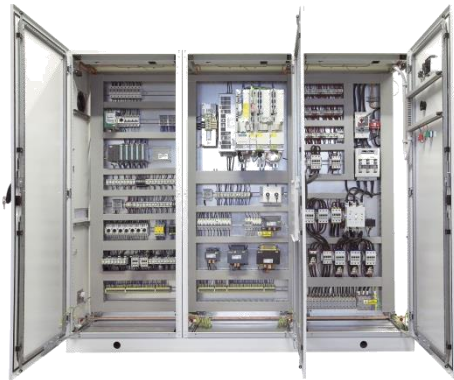
Pneumatic Control System

- Actuators and Drives
- Motors and Servo Drives
- Grippers Systems
- Valves and Manifolds
- Vacuum Technologies
- Motion Terminal/ Valve Terminals
- Sensor Technologies
- Compressed Air Preparation
- Connectors, Fittings & Tubings



Hydraulic Control Systems

- Valves & Cylinders
- Self-contained Actuators
- Motor & Pumps
- Fittings, Hose, Assemblies & Kits
- Power Units and Accumulators
- Manifolds & Plates



Electrical/ Power Control Systems

- LT Panels
- MCC - Motor Control Center Panels
- PLC/DCS Control Panels
- PFI - Power Factor Improvement Panels
- AMF/ATS - (Auto Transfer Switch)
- VFD Control Panels
- Light Distribution Panels
- Synchronization Panels
- Power Distribution Boxes

Mechanical Equipment & Systems

- Pipe Fabrication
- Mechanical Construction
- Sheet Metal Fabrication
- Power Panels Fabrication
- Vessels & Steel Tanks
- SS/MS & Belt Conveyors
- Mechanical Valves
- Electroplating Tanks
- Customized Machine



F&G Detection & Suppression System

- IR, UV, UVIR, Flame Detectors
- Multispectrum Flame Detectors
- Combustible, Toxic, Detectors
- Oxygen Depletion Detectors
- Ultrasonic Gas Leak Detectors
- Gas Sampling Systems
- Certified Fire & Gas Safety Systems
- Ultra-High-Speed Flame Detection and Releasing Systems
- Smoke & Heat Detectors
- Existing Systems Up-gradation
- Fire Sprinkles Valves & Devices
- Certified Control Systems

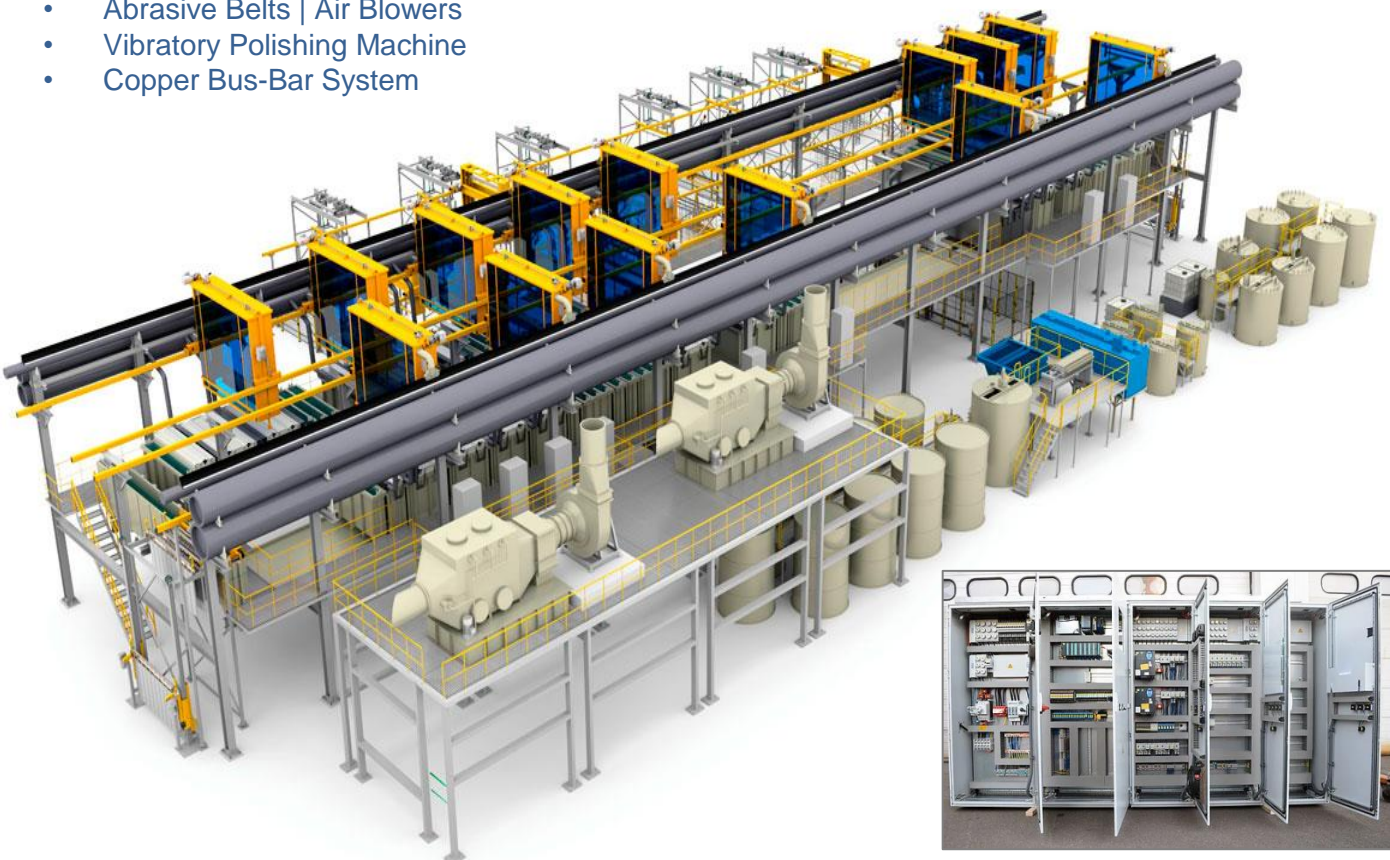


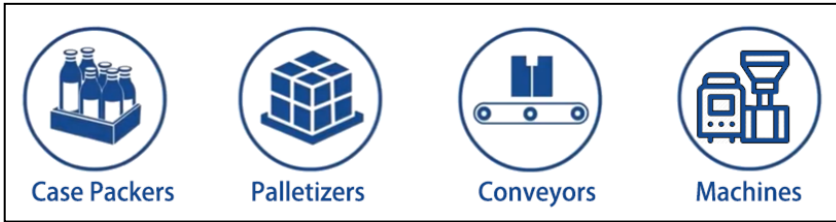
Spare Parts Management

- Accurate and Comprehensive Data
- Forecasting and Demand Planning
- Centralized Spare Parts Inventory Management
- Standardization of Spare Parts Inventory Management
- Inventory Monitoring and Analysis
- Supplier Management
- Automation has become an essential component of inventory management

Chemical Industry Equipment :

- Automatic/Semi/Manual Plating Lines
- Automation & Control System for Plating Lines
- Process Tanks – PP | PVC | MS | SS
- Rectifiers | Filter Pumps | Fume Extraction
- Abrasive Belts | Air Blowers
- Vibratory Polishing Machine
- Copper Bus-Bar System





Case/Bag Packing

- Carton Forming & Taping
- Carton Filling
- Carton Strapping
- Form-Fill-Seal
- Bag Packing

Pallet Packing

- Palletizing & De-Palletizing
- Pallet Wrapping
- Pallet Strapping

Associated

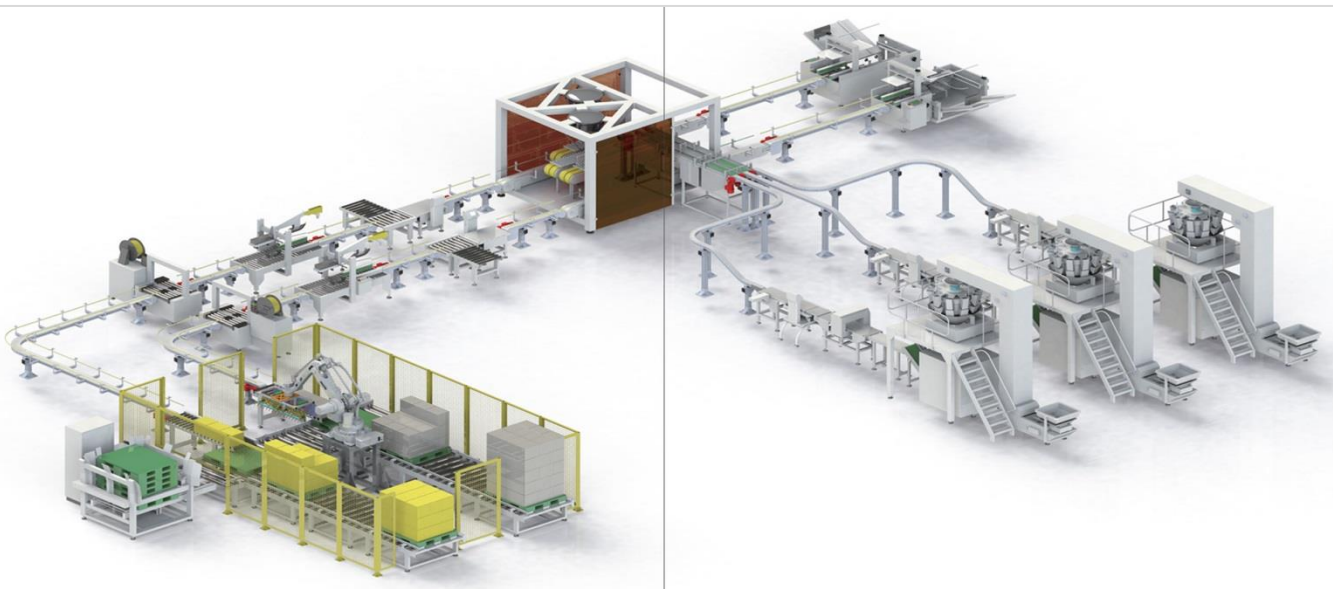
- Labeler
- Checkweigher
- Metal Detector
- Strong & Retrieval
- Air Treatment

Conveyors

- Plastic/SS Chain Conveyor
- Belt Conveyor
- Wheels Chain Conveyor
- Roller Conveyor
- Spiral Elevating Conveyor
- Slat China Conveyor
- Continuous Vertical Elevator
- Swivel Pilot Wheel Sortation Conveyor

Parts & Components

- Sliding Power Supply
- Pneumatic Hand Strapping Machine
- Antistatic Wrist Strap
- Static Eliminating Ionizer
- Portable Battery Powered Strapping Tool



Engineering Services

Our engineering team play a crucial role in optimizing production while minimizing maintenance costs.

By integrating knowledge from various fields—such as mechanical, electrical, software, and systems engineering—they can design efficient, robust systems.

Their collaborative approach ensures that all components work seamlessly together, leading to enhanced reliability and reduced downtime.



Key benefits include:

Design: Consideration of all engineering aspects leads to more efficient processes.

Proactive Maintenance: Predictive maintenance strategies can be implemented to foresee and prevent issues.

Cross-Disciplinary Solutions: Innovations often arise from blending insights from different engineering disciplines.

Cost Efficiency: Streamlined processes and fewer breakdowns reduce overall production costs.



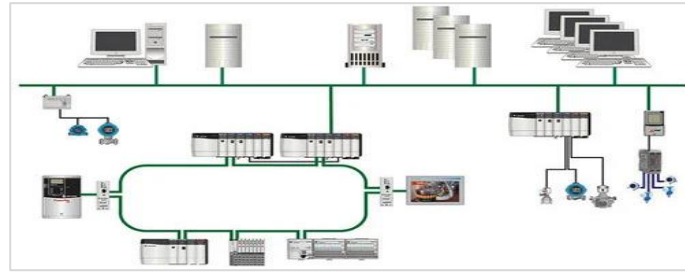
By leveraging their diverse expertise, multi-disciplinary engineers are essential for sustaining high productivity in today's complex manufacturing environments.



Capabilities:

Control Systems Design:

Our dedicated team excels in crafting advanced control systems, employing state-of-the-art technology to ensure precision and reliability in a wide range of industrial processes. We understand the critical role that control systems play in optimizing operations and guaranteeing efficient and error-free performance.



Project Management:

With our skilled project management professionals at the helm, we ensure the seamless execution of tasks from project inception to completion. We meticulously plan, monitor, and adapt, ensuring projects are delivered on time and within budget while maintaining the highest quality standards.



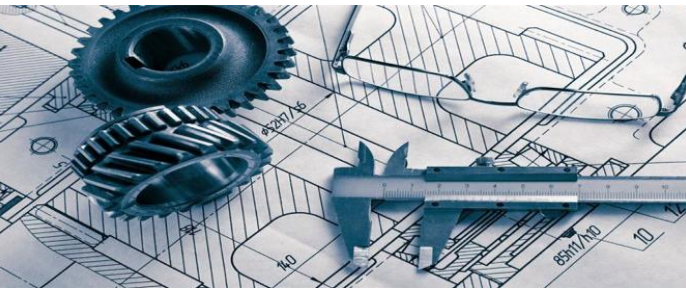
Procurement Services:

Our procurement services go beyond mere transactions. We've honed a streamlined sourcing process that combines meticulous supplier selection with cost-effectiveness, ensuring the timely acquisition of vital components and materials. This approach minimizes downtime and maximizes cost savings for our clients.



Design & Development:

Our culture of innovation drives our design and development efforts. We take pride in pushing the boundaries of what's possible, resulting in pioneering product and system designs that not only meet but often exceed industry standards. Our solutions are tailored to meet the unique needs of each client, promoting long-term success.



Engineering Services:

Our comprehensive suite of engineering services covers the entire spectrum, from initial design to in-depth analysis and optimization. We collaborate closely with clients to understand their specific needs and challenges, delivering tailored engineering solutions that drive efficiency, safety, and sustainability across various industries.



Maintenance & Support:

Our commitment to client satisfaction extends well beyond the installation phase. We offer ongoing maintenance and support services, ensuring that equipment continues to operate at peak performance. Our responsive support team is available to address any issues promptly, minimizing downtime and disruptions to your business operations.



Key Partners:

 SIEMENS <i>Ingenuity for life</i>	 EMERSON	 Rockwell Automation	 ABB
 Schneider Electric	 Honeywell		 YOKOGAWA ◆
 BECKHOFF	 AVEVA		
 Weidmüller 		 FLOWERVE	 RITTAL
 FESTO	 SMC	 Parker	 Rexroth Bosch Group



AUTOWELL

AUTOWELL ENGINEERING PVT LTD

780 Block R-1, Johar Town Lahore – Pakistan

Phone: +92-423-595-6006, +92-423-595-6007

Email: info@autowell-eng.com - URL: www.autowell-eng.com